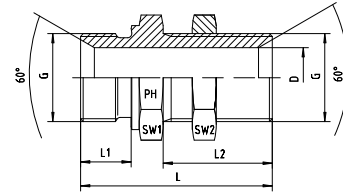
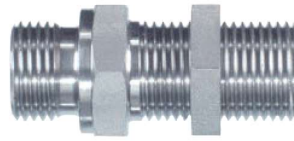




BSP - BSP
Schottausführung mit Kontermutter und 60°-Konus

BSP Male - BSP Male
Both sides with 60°-Cone and Back Nut



Druck Pressure	Gewinde Thread	Ca. Maße Approx. Dimensions						Bestellzeichen Order-Code
PN	G	L	L1	L2	D	SW1	SW2	
400	1/8"-28	42,5	8	28	4,5	14	14	1050511-02
400	1/4"-19	46,0	11	28	6,0	19	19	1050511-04
400	3/8"-19	52,0	12	32	8,0	22	22	1050511-06
400	1/2"-14	59,0	14	35	11,0	27	27	1050511-08
400	5/8"-14	63,0	16	35	14,5	30	30	1050511-10
400	3/4"-14	66,0	16	38	16,5	32	32	1050511-12
400	1"-11	72,0	19	41	22,5	41	41	1050511-16
200	1 1/4"-11	78,0	20	44	30,5	50	50	1050511-20
200	1 1/2"-11	84,0	22	48	37,0	55	55	1050511-24
100	2"-11	91,0	23	48	46,0	70	70	1050511-32